

5.1 Review WS

THE BEST WAY TO SPREAD HOLIDAY CHEER IS SINGING LOUD FOR ALL TO HEAR

GIVEN: \overline{RE} IS A PERPENDICULAR BISECTOR OF \overline{GO} . \overline{RO} IS AN ANGLE BISECTOR OF $\angle GOT$. $MT = 5$.
 FIND THE MEASURE OF EACH ANGLE OF SIDE LENGTH BELOW:

1. $GO =$ _____

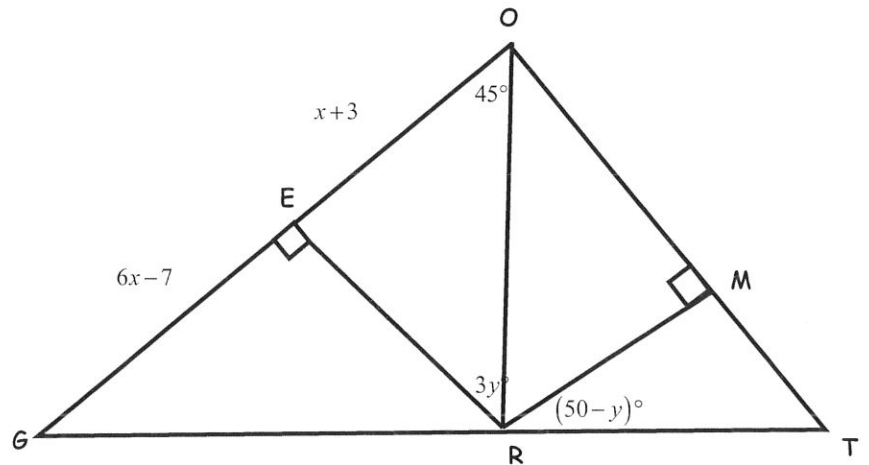
2. $\angle ERO =$ _____

3. $\angle MRT =$ _____

4. $MO =$ _____

5. $\angle MTR =$ _____

6. $\angle ORM =$ _____

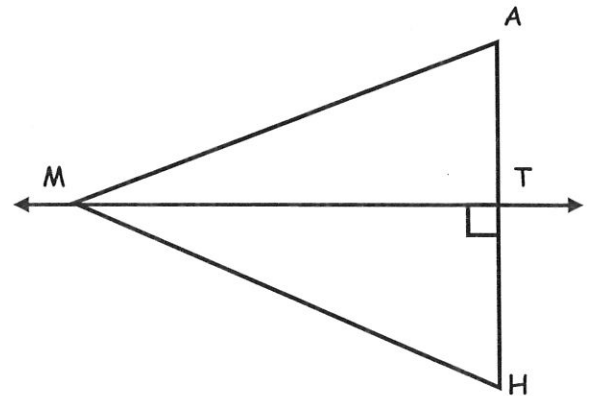


USE THE DIAGRAM TO THE RIGHT TO ANSWER 7 - 9.

7. Given that \overline{MT} is the perpendicular bisector of \overline{AH} and $MH = 8.25$. Find MA .

8. Given that \overline{MT} is the perpendicular bisector of \overline{AH} , $MA = x + 12$ and $MH = 3x - 17$, find MH .

9. Given that $MA = 70.2$, $AT = 26.5$, and $MH = 70.2$, find AH .



USE THE DIAGRAM TO THE RIGHT TO ANSWER 10 - 12.

10. Given that $m\angle RSQ = m\angle TSQ$ and $TQ = 1.3$, find RQ .

11. Given that $m\angle RSQ = 58^\circ$, $RQ = 49$, and $TQ = 49$, find $m\angle RST$.

12. Given that $RQ = TQ$, $m\angle QSR = (9a + 48)^\circ$, and $m\angle QST = (6a + 50)^\circ$, find $m\angle QST$.

